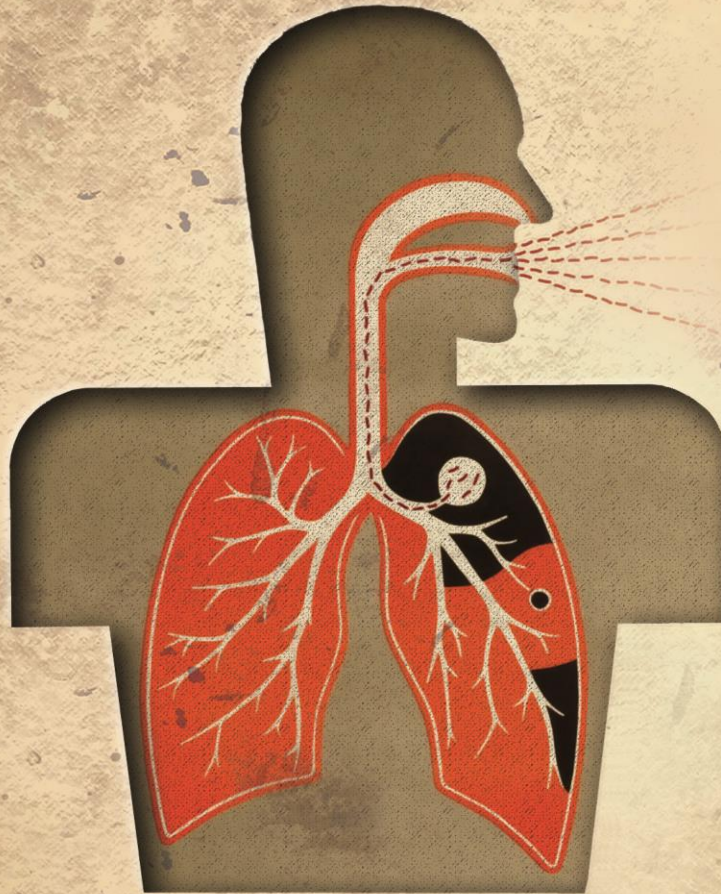




PUNJAB INFORMATION TECHNOLOGY BOARD
HEALTH REPORTING SYSTEM WEEKLY SITREP
 Epidemiological Week No.13 (27th March, 2016 to 2nd April, 2016)



**FOCUSING
TUBERCULOSIS**

Patrons in Chief:

Khawaja Salman Rafique (Advisor to CM Punjab on Health)
 Chairman, PITB | Secretary Specialized Healthcare and
 Medical Education Department

Patrons:

Dr. Salman Shahid (AS Technical SHCME)
 Faisal Yousaf (D.G IT Operations) | Rizwan Rashid (D.G IT)
 Director General Health Services Punjab

Editors:

Prof. Maaz Ahmad | Prof. Waseem Akram
 Dr. Somia Iqtadar | Dr. Jamshaid Ahmad
 Saflain Haider | Dr. Anjum Razzaq
 Dr. Nasir Shakir (DS-SHCME)

Sub Editors:

Arsalan Manzoor | Sundas Kouser | Moeen Akhter

Designer:

Nida Fatima

16 Acute Flaccid Paralysis

12 Muzaffargarh 2 Lahore
 2 Mandi Bahauddin

15 Cutaneous Leishmaniasis

(Suspected)
 15 Multan

12 Neonatal Tetanus

(Suspected)
 8 Rahim Yar Khan 2 Lahore
 1 Toba Tek Singh
 1 Muzaffargarh

01 Diphtheria

(Suspected)
 1 Faisalabad

01 HIV/AIDS (Suspected)

1 Bhakkar



Punjab Information
 Technology Board



Institute of
 Public Health



World Health
 Organization
Country office for Pakistan



Specialized Healthcare
 and Medical Education
 Department



King Edward
 Medical University
 Lahore



University of
 Agriculture Faisalabad

HEALTH REPORTING SYSTEM

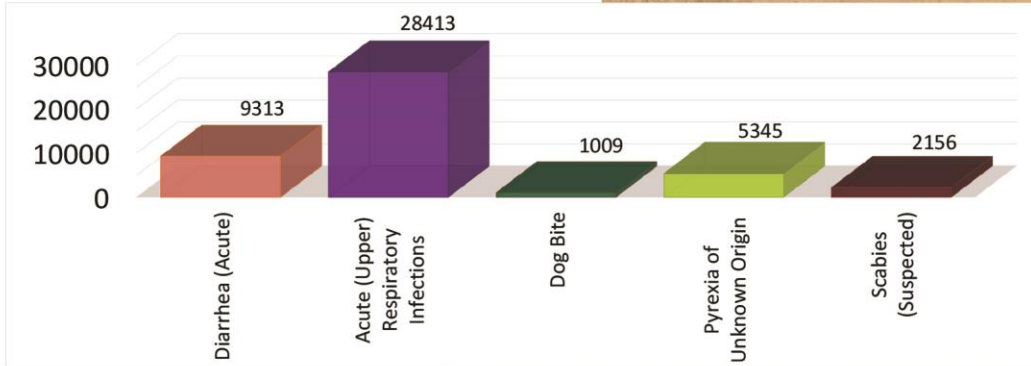
Epidemiological Week No.13 (27th March, 2016 to 2nd April, 2016)



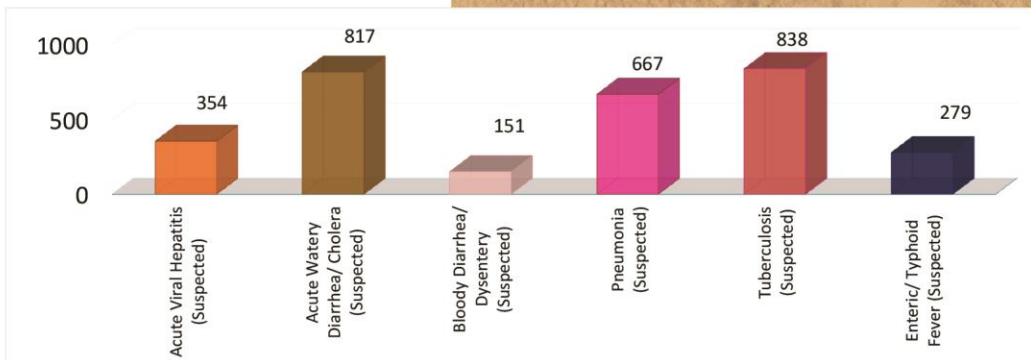
WEEKLY SITREP

COMMUNICABLE DISEASE SITUATION - PUNJAB (WEEK 13, 2016)

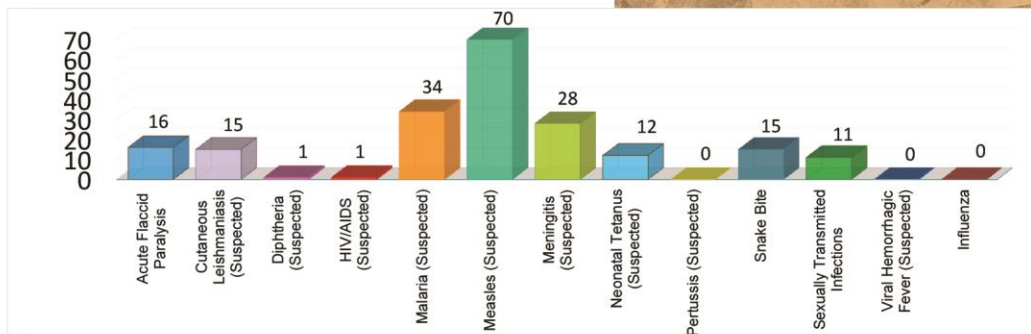
Diseases with number of cases >1000



Diseases with number of cases between 100 & 1000



Diseases with number of cases < 100



Acute Diarrhea: Cases which do not fit in the definition of Dysentery or Acute Watery Diarrhea

2/8

* Data as reported from THQ, DHQ & Teaching Hospitals of Punjab

HEALTH REPORTING SYSTEM

Epidemiological Week No.13 (27th March, 2016 to 2nd April, 2016)



WEEKLY SITREP

FOCUSING TUBERCULOSIS

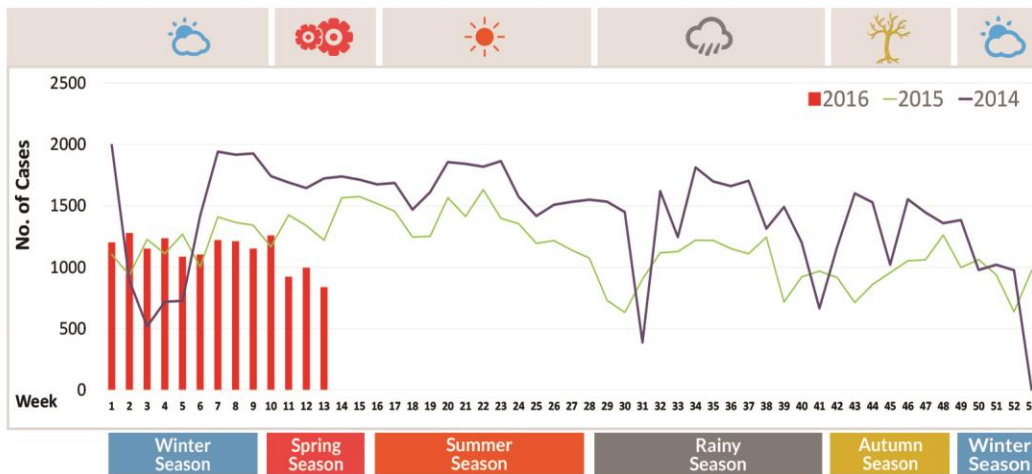
(WEEK 1 TO WEEK 13, 2016)

TOTAL ENTRIES = 14659

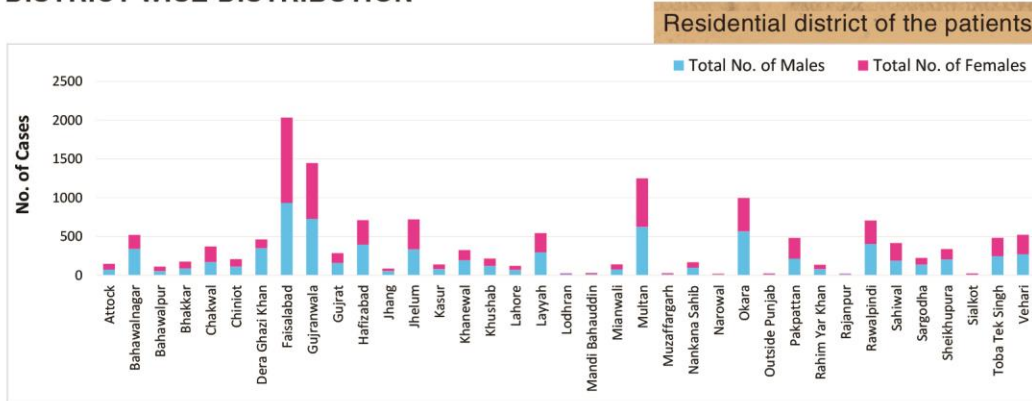
CASE DEFINITION

Suspected Case of Tuberculosis: Any person who presents with symptoms or signs suggestive of Pulmonary Tuberculosis, in particular cough of long duration. Symptoms may also include hemoptysis, chest pain, breathlessness, fever/night sweats, tiredness, loss of appetite and significant weight loss.

WEEK WISE DISTRIBUTION



DISTRICT WISE DISTRIBUTION



* Data as reported from THQ, DHQ & Teaching Hospitals of Punjab

HEALTH REPORTING SYSTEM

Epidemiological Week No.13 (27th March, 2016 to 2nd April, 2016)



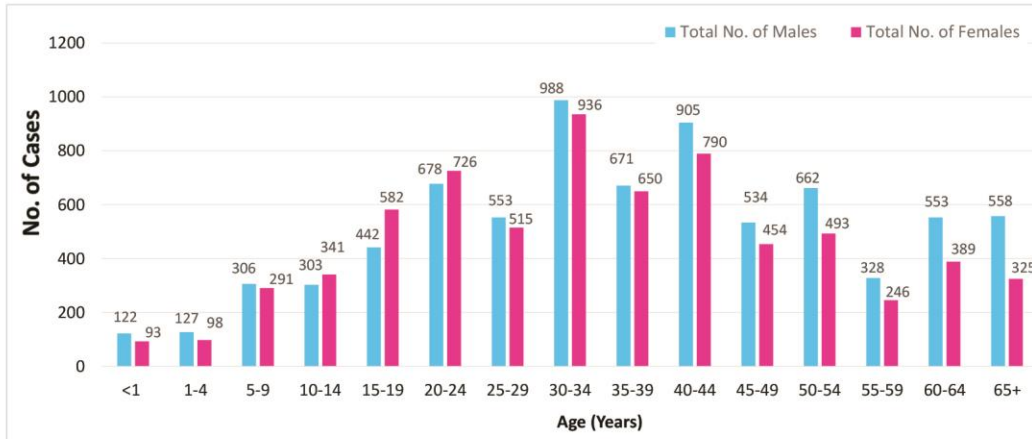
WEEKLY SITREP

FOCUSING TUBERCULOSIS

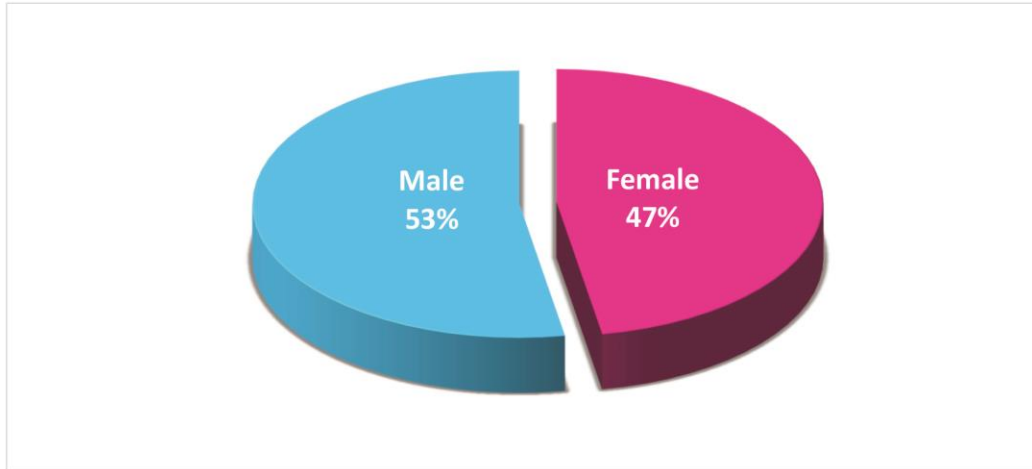
(WEEK 1 TO WEEK 13, 2016)

TOTAL ENTRIES = 14659

AGE WISE DISTRIBUTION



GENDER WISE DISTRIBUTION



* Data as reported from THQ, DHQ & Teaching Hospitals of Punjab

4/8



Punjab Information Technology Board



Institute of Public Health



World Health Organization
Country office for Pakistan



Specialized Healthcare and Medical Education Department



King Edward Medical University Lahore



University of Agriculture Faisalabad

HEALTH REPORTING SYSTEM

Epidemiological Week No.13 (27th March, 2016 to 2nd April, 2016)



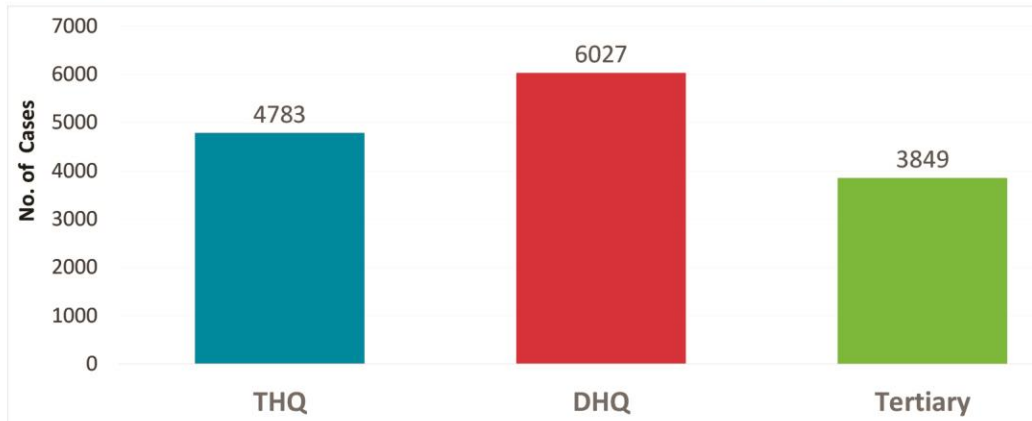
WEEKLY SITREP

FOCUSING TUBERCULOSIS

(WEEK 1 TO WEEK 13, 2016)

TOTAL ENTRIES = 14659

CASES REPORTED FROM VARIOUS TYPES OF HEALTH FACILITIES



LEGEND

● Acute Flaccid Paralysis (AFP)	● Diphtheria (Suspected) (Diph)
● Acute (Upper) Respiratory infections (ARI)	● Dog Bite (DB)
● Acute Viral Hepatitis (Suspected) (AVH)	● Enteric /Typhoid Fever (Suspected) (TF)
● Acute Watery Diarrhea/Cholera (Suspected) (AWD)	● HIV/AIDS (Suspected) (HIV/AIDS)
● Tuberculosis (Suspected) (TB)	● Malaria (Suspected) (Mal)
● Bloody Diarrhea/Dysentery (Suspected) (BD)	● Measles (Suspected) (Meas)

● Pyrexia of Unknown Origin (PUO)	● Cutaneous Leishmaniasis (Suspected) (CL)
● Scabies (Suspected) (Scb)	● Diarrhoea (Acute) (AD)
● Sexually Transmitted Infections (STIs)	● Meningitis (Suspected) (Men)
● Snake Bite (with signs/ symptoms of poisoning) (SB)	● Neonatal Tetanus (Suspected) (NNT)
● Viral Hemorrhagic Fever (Suspected) (VHF)	● Pertussis (Suspected) (Pert)
● Pneumonia (Suspected) (Pneuo)	

H Tehsil Head Quarter THQ	H Rural Health Center RHC	H Teaching Hospital Tertiary
H District Head Quarter DHQ	H Basic Health Unit BHU	H Executive District Officer Health EDO(H)

* Data as reported from THQ, DHQ & Teaching Hospitals of Punjab

5/8

HEALTH REPORTING SYSTEM

Epidemiological Week No.13 (27th March, 2016 to 2nd April, 2016)



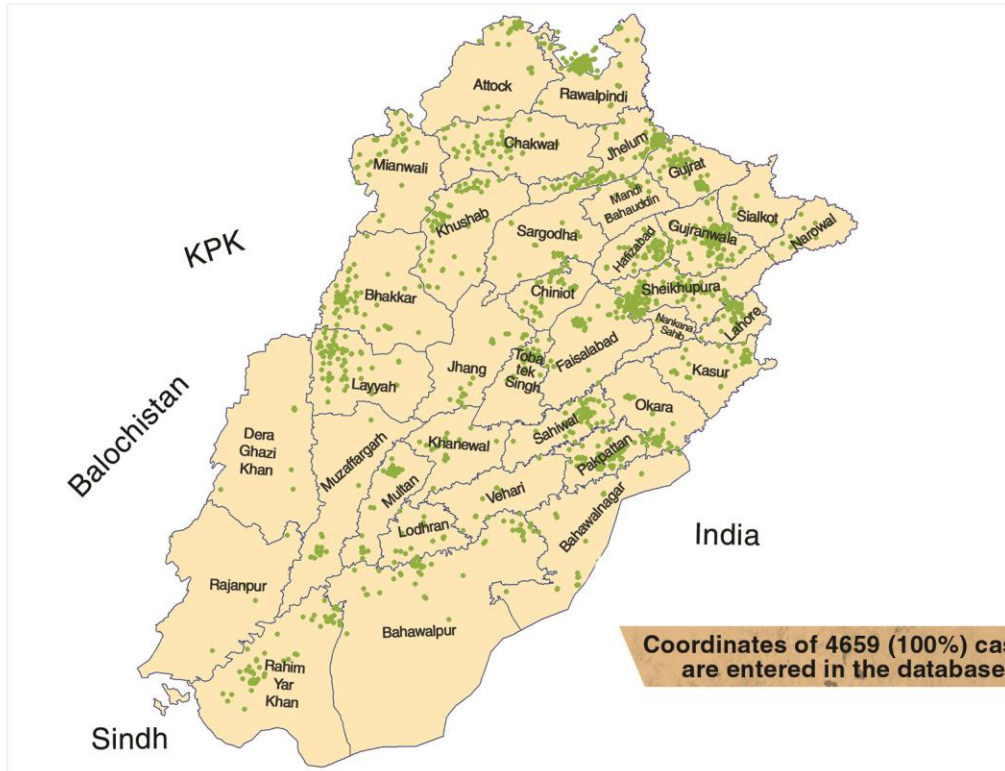
WEEKLY SITREP

FOCUSING TUBERCULOSIS

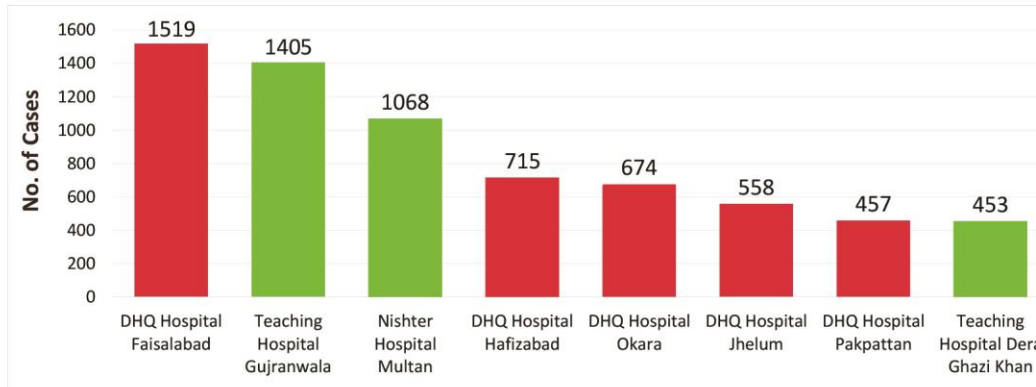
(WEEK 1 TO WEEK 13, 2016)

TOTAL ENTRIES = 14659

EPIDEMIOLOGICAL MAP



TOP REPORTING HOSPITALS



* Data as reported from THQ, DHQ & Teaching Hospitals of Punjab

6/8

HEALTH REPORTING SYSTEM

Epidemiological Week No.13 (27th March, 2016 to 2nd April, 2016)



WEEKLY SITREP

Focusing Disease Wheel

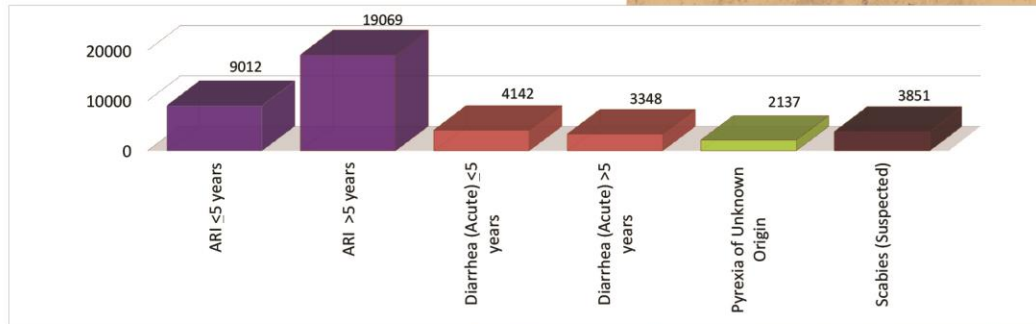
(Week 13, 2016)

TOTAL CASES = 39843

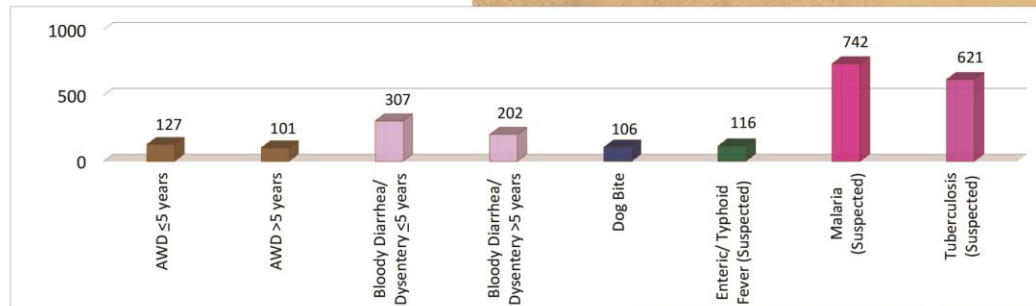


DISEASE WISE DISTRIBUTION

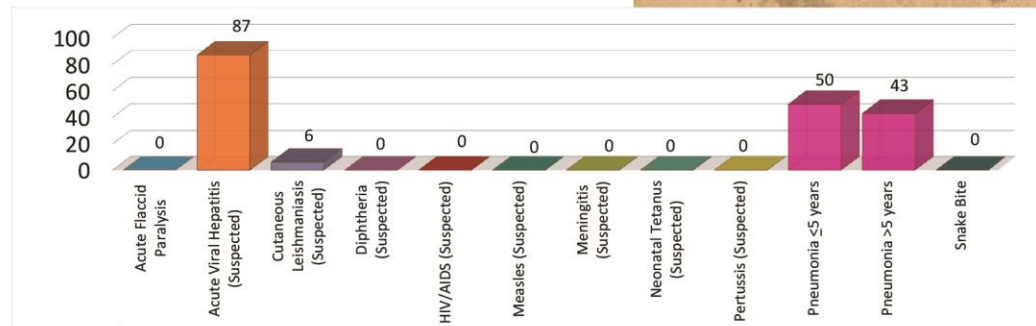
Diseases with number of cases >1000



Diseases with number of cases between 100 & 1000



Diseases with number of cases < 100



Acute Diarrhea: Cases which do not fit in the definition of Dysentery or Acute Watery Diarrhea

* Data as reported using disease wheel

7/8

HEALTH REPORTING SYSTEM

Epidemiological Week No.13 (27th March, 2016 to 2nd April, 2016)



WEEKLY SITREP

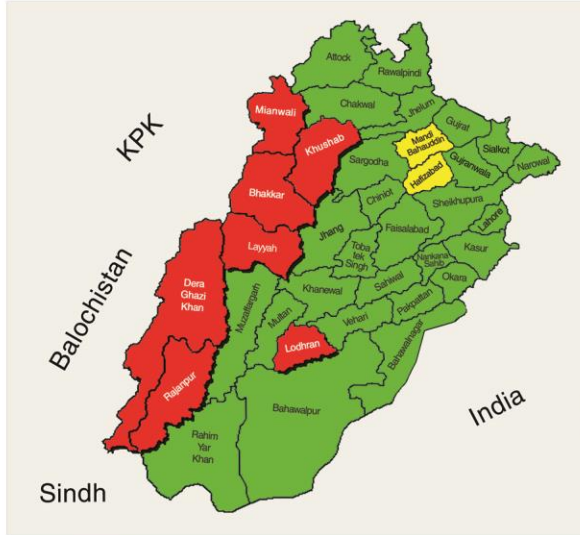
Focusing Disease Wheel

(Week 13, 2016)

TOTAL CASES = 39843



DISTRICT WISE SMS RESPONSE



- No response
- Response on less than 4 days of the week
- Response on 4 or more days of the week

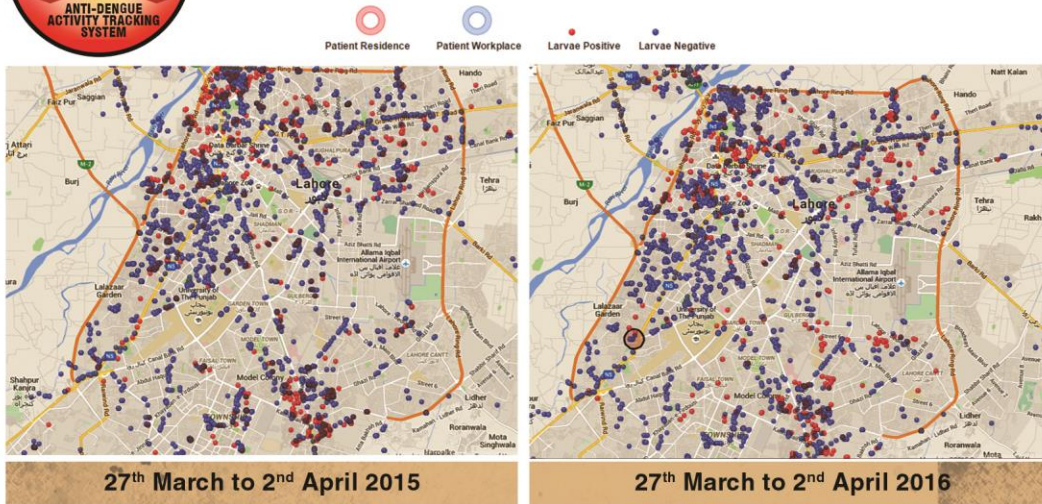


EDO's(H) of the districts with response on less than 4 days of the week (colored red and yellow) must ensure consistent reporting.



Focusing Dengue Surveillance in Lahore District

(Week 13, 2016)



8/8