



PUNJAB INFORMATION TECHNOLOGY BOARD HEALTH REPORTING SYSTEM

WEEKLY SITREP

Focusing Pneumonia



Patrons in Chief:

Khawaja Salman Rafique (Advisor to CM Punjab on Health) | Chairman, PITB
Secretary Specialized Healthcare and Medical Education Department

Patrons:

Dr. Salman Shahid (AS Technical SHC&ME) | Faisal Yousaf (D.G IT Operations)
Rizwan Rashid (D.G IT)

Editors:

Prof. Rubina Sarmad | Prof. Waseem Akram | Dr. Somia Iqtadar
Dr. Jamshaid Ahmad | Safiain Haider | Dr. Anjum Razzaq
Dr. Nasir Shakir (DS-SHC&ME)

Sub Editors:

Arsalan Manzoor | Sundas Kouser | Moeen Akhter

Designer:

Nida Fatima

23 Acute Flaccid Paralysis

7 Mianwali 6 Lahore
3 Faisalabad 2 Jhelum
2 Muzaffargarh 1 Sahiwal
1 Narowal 1 Bahawalnagar

11 Measles (Suspected)

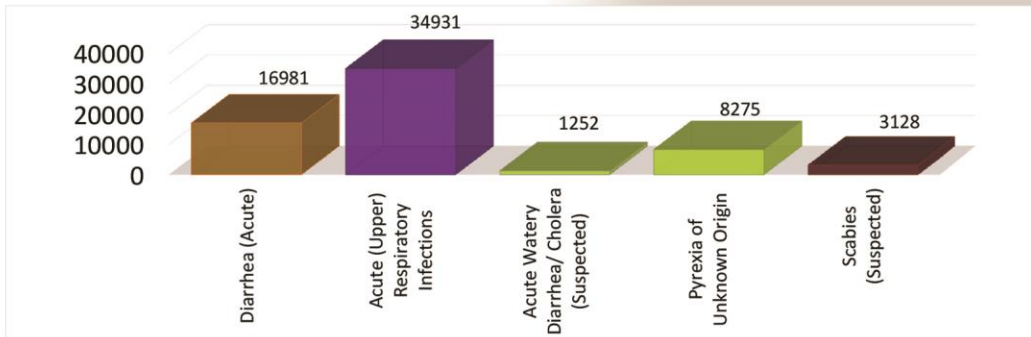
5 Lahore 2 Rawalpindi
2 Toba Tek Singh 1 Pakpattan
1 Rajanpur

05 Diphtheria (Suspected)

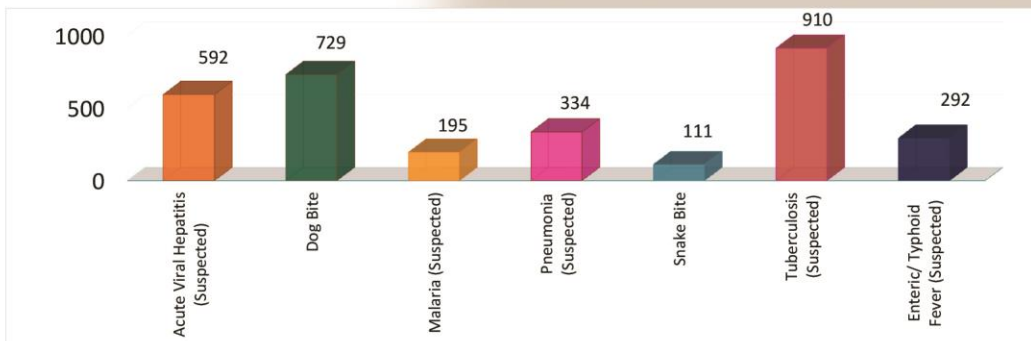
3 Lahore
1 Faisalabad 1 Rawalpindi

Communicable Disease Situation - Punjab
(Week 34, 2016)
TOTAL CASES = 67945

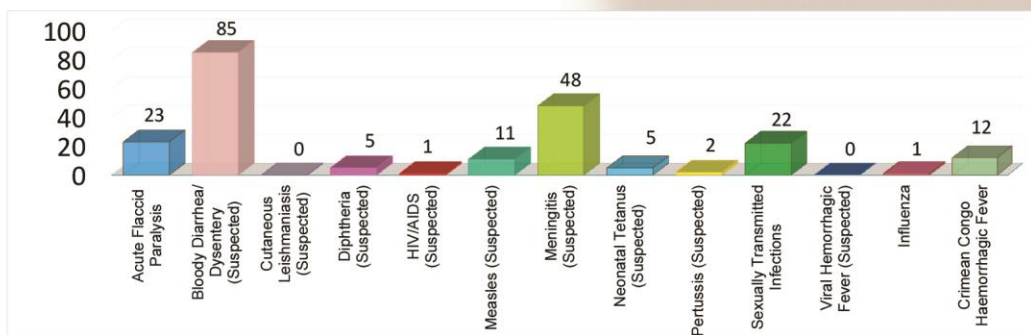
Diseases with number of cases >1000



Diseases with number of cases between 100 & 1000



Diseases with number of cases < 100



Acute Diarrhea: Cases which do not fit in the definition of Dysentery or Acute Watery Diarrhea

* Data as reported from THQ, Non Teaching DHQ & Teaching Hospitals of Punjab

HEALTH REPORTING SYSTEM

Epidemiological Week No.34 (21st August, 2016 to 27th August, 2016)

WEEKLY SITREP

FOCUSING PNEUMONIA

(WEEK 1 TO WEEK 34, 2016)

TOTAL ENTRIES = 22981

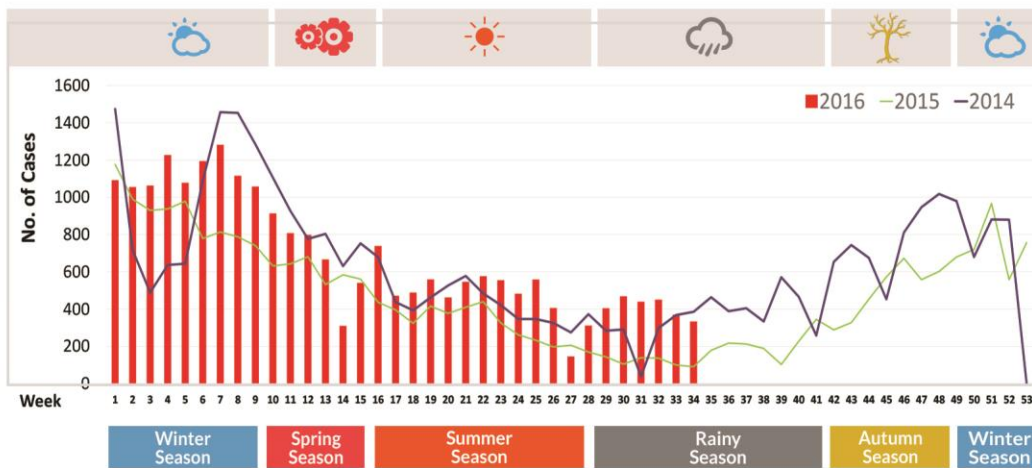
CASE DEFINITION

Children ≤ 5 years: Any child presenting with cough or difficult breathing with any one of these:

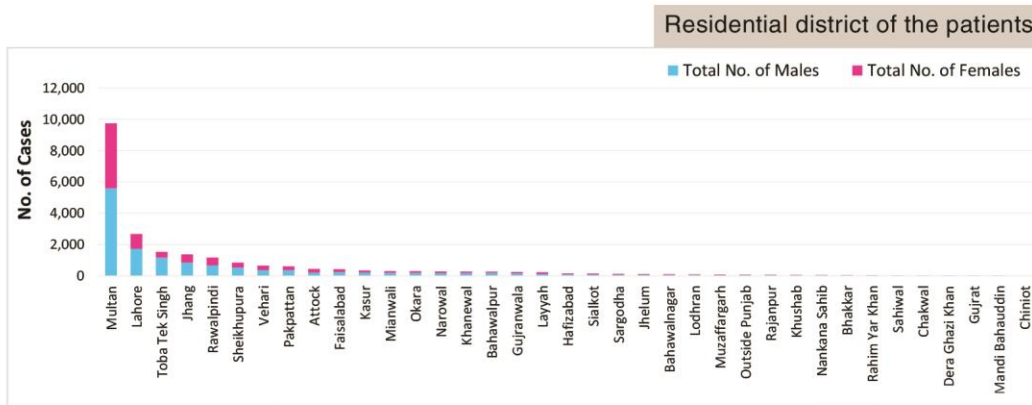
- Fast breathing, (less than 2 months ≥ 60 breaths/min, 2 months to 12 months, ≥50 breaths /min, 12 months to 5 years, ≥ 40 breaths/min).
- Lower chest wall in-drawing ● Unable to drink or breastfeed ● Difficulty to awaken
- Fits / convulsions ● Stridor in calm child.

Over 5 years: Any person presenting with acute onset of cough, fever, difficulty in breathing and chest pain which increases with breathing.

WEEK WISE DISTRIBUTION



DISTRICT WISE DISTRIBUTION



* Data as reported from THQ, Non Teaching DHQ & Teaching Hospitals of Punjab

3/8

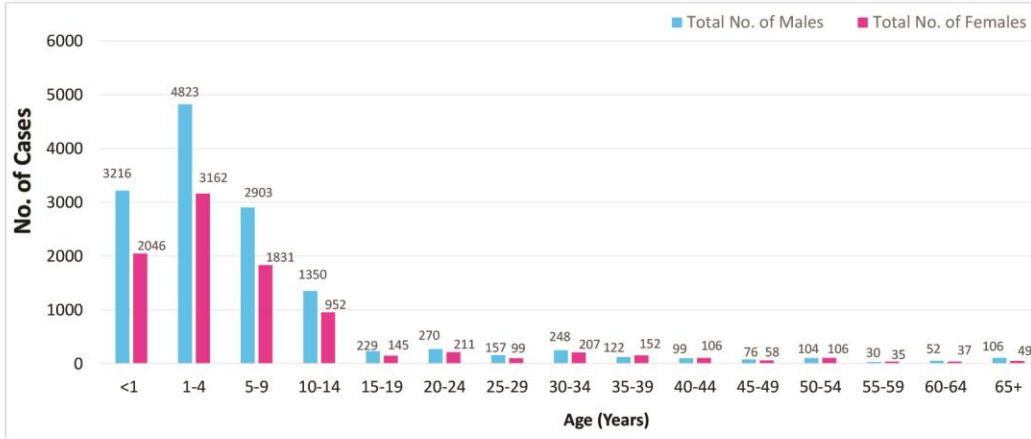
HEALTH REPORTING SYSTEM

Epidemiological Week No.34 (21st August, 2016 to 27th August, 2016)

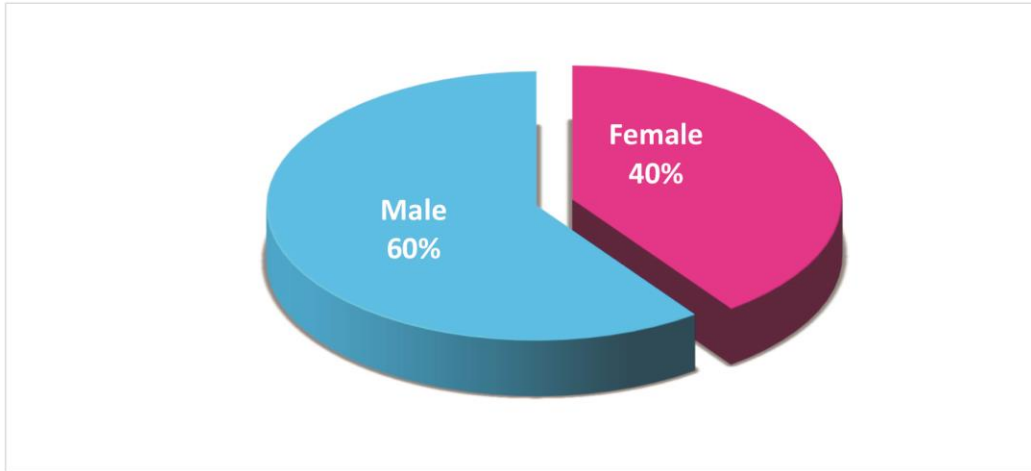
WEEKLY SITREP

FOCUSING PNEUMONIA (WEEK 1 TO WEEK 34, 2016) TOTAL ENTRIES = 22981

AGE WISE DISTRIBUTION



GENDER WISE DISTRIBUTION



* Data as reported from THQ, Non Teaching DHQ & Teaching Hospitals of Punjab

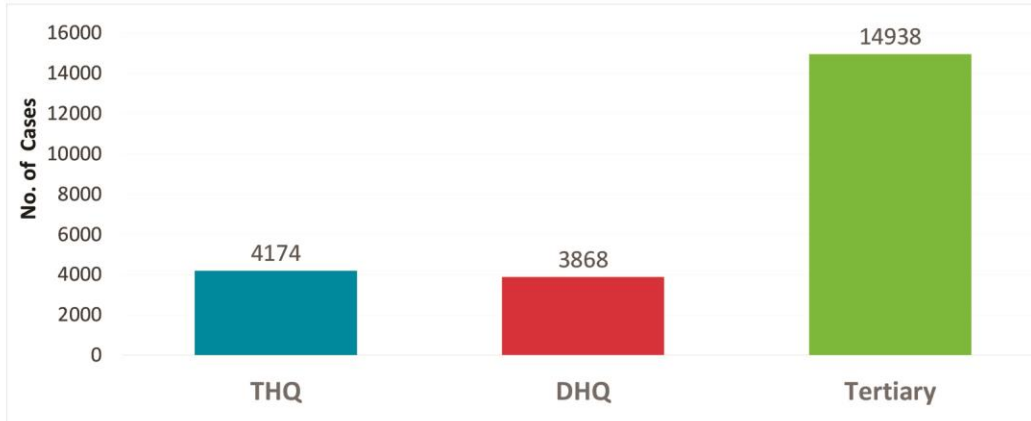
4/8

FOCUSING PNEUMONIA

(WEEK 1 TO WEEK 34, 2016)

TOTAL ENTRIES = 22981

CASES REPORTED FROM VARIOUS TYPES OF HEALTH FACILITIES



LEGEND

● Acute Flaccid Paralysis (AFP)	● Diphtheria (Suspected) (Diph)	
● Acute (Upper) Respiratory infections (ARI)	● Dog Bite (DB)	
● Acute Viral Hepatitis (Suspected) (AVH)	● Enteric /Typhoid Fever (Suspected) (TF)	
● Acute Watery Diarrhea/Cholera (Suspected) (AWD)	● HIV/AIDS (Suspected) (HIV/AIDS)	
● Tuberculosis (Suspected) (TB)	● Malaria (Suspected) (Mal)	
● Bloody Diarrhea/Dysentery (Suspected) (BD)	● Measles (Suspected) (Meas)	
● Influenza (Inf)	● Crimean Congo Haemorrhagic Fever (CCHF)	
● Pyrexia of Unknown Origin (PUO)	● Cutaneous Leishmaniasis (Suspected) (CL)	
● Scabies (Suspected) (Scb)	● Diarrhoea (Acute) (AD)	
● Sexually Transmitted Infections (STIs)	● Meningitis (Suspected) (Men)	
● Snake Bite (with signs/ symptoms of poisoning) (SB)	● Neonatal Tetanus (Suspected) (NNT)	
● Viral Hemorrhagic Fever (Suspected) (VHF)	● Pertussis (Suspected) (Pert)	
● Pneumonia (Suspected) (Pneuo)		
H Tehsil Head Quarter THQ	H Rural Health Center RHC	H Teaching Hospital Tertiary
H District Head Quarter DHQ	H Basic Health Unit BHU	H Executive District Officer Health EDO(H)

* Data as reported from THQ, Non Teaching DHQ & Teaching Hospitals of Punjab

HEALTH REPORTING SYSTEM

Epidemiological Week No.34 (21st August, 2016 to 27th August, 2016)

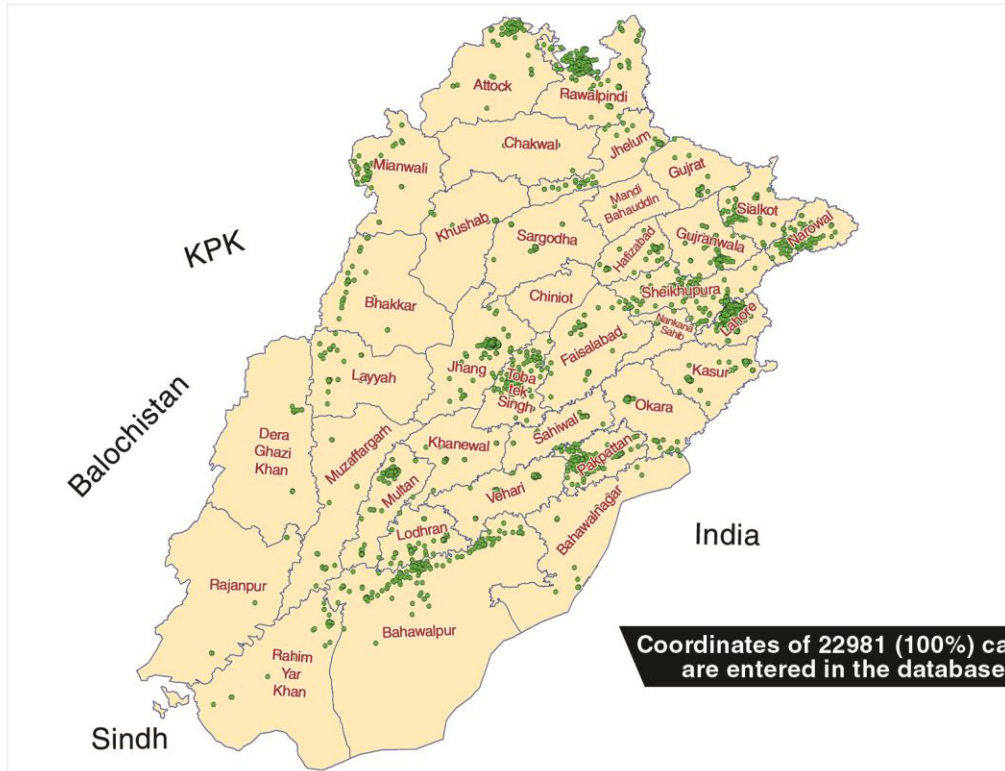
WEEKLY SITREP

FOCUSING PNEUMONIA

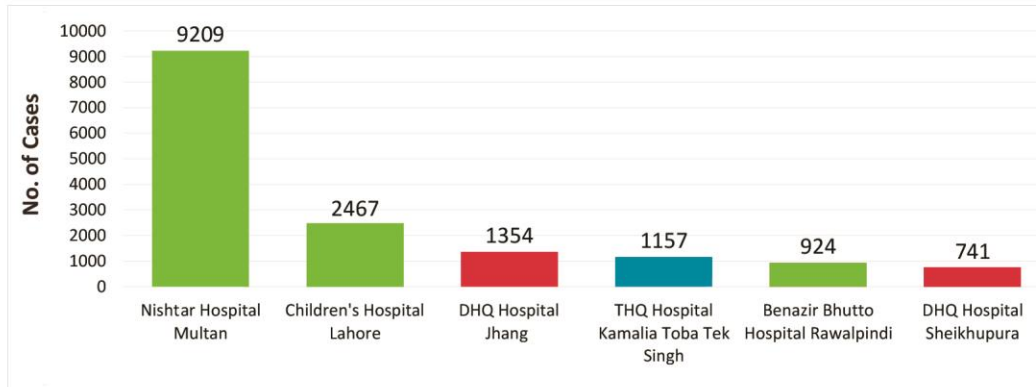
(WEEK 1 TO WEEK 34, 2016)

TOTAL ENTRIES = 22981

EPIDEMIOLOGICAL MAP



TOP REPORTING HOSPITALS



* Data as reported from THQ, Non Teaching DHQ & Teaching Hospitals of Punjab

6/8



HEALTH REPORTING SYSTEM

Epidemiological Week No.34 (21st August, 2016 to 27th August, 2016)

WEEKLY SITREP

Focusing Disease Wheel

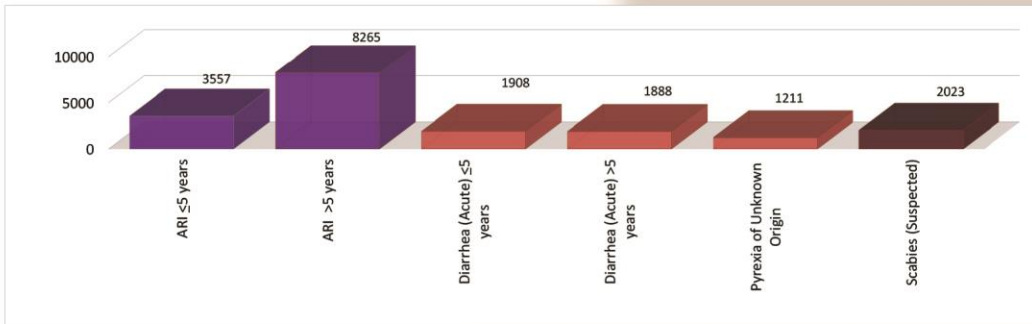
(Week 34, 2016)

TOTAL CASES = 20401

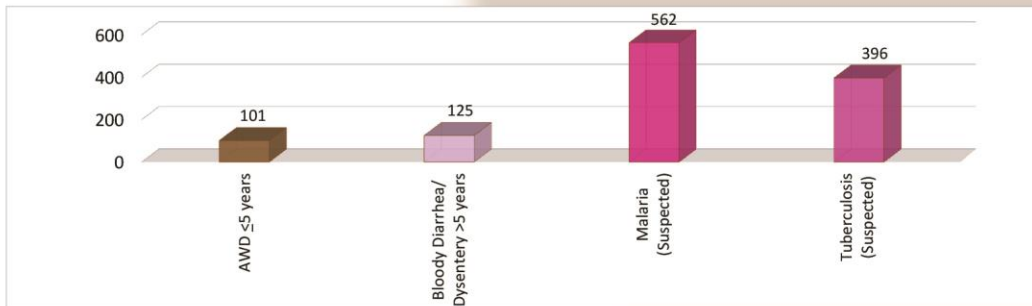


DISEASE WISE DISTRIBUTION

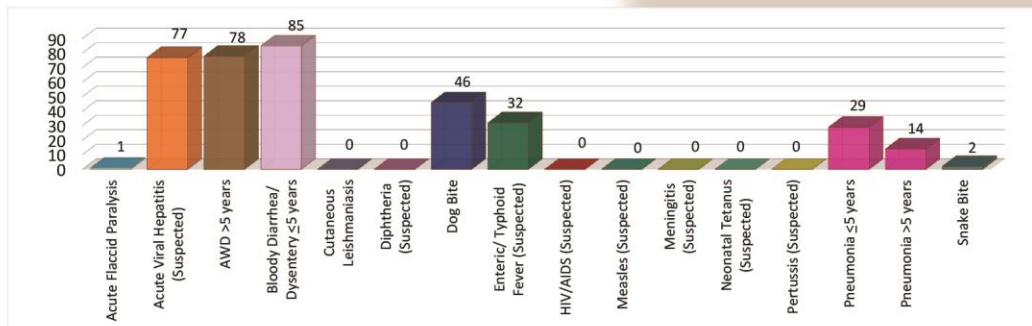
Diseases with number of cases >1000



Diseases with number of cases between 100 & 1000



Diseases with number of cases < 100



Acute Diarrhea: Cases which do not fit in the definition of Dysentery or Acute Watery Diarrhea

* Data as reported using disease wheel

HEALTH REPORTING SYSTEM

Epidemiological Week No.34 (21st August, 2016 to 27th August, 2016)

WEEKLY SITREP

Focusing Dengue (Week 34, 2016)

Districts	Indoor Surveillance				Outdoor Surveillance			
	Number of Houses Checked	Number of Houses Positive	Total Containers Checked	Total Containers Positive	Number of Spots Checked	Number of Spots Positive	Total Containers Checked	Total Containers Positive
ATTOCK	21922	10	69874	10	2316	2	7845	2
BAHAWALNAGAR	59571	0	204377	0	11417	0	17883	0
BAHAWALPUR	63772	0	197484	0	10176	0	24427	0
BHAKKAR	15132	0	39512	0	3353	0	9051	0
CHAKWAL	51538	0	181190	0	5802	5	24484	11
CHINIOT	4053	0	13921	0	272	0	950	0
D.G.KHAN	16498	0	35842	0	12329	0	26535	0
FAISALABAD	50077	10	143953	10	44386	7	128220	7
GUJRANWALA	114599	10	332510	15	34637	7	91523	7
GUJRAT	35795	0	113282	0	2881	0	4558	0
HAFIZABAD	26219	0	49111	0	1644	0	2438	0
JHELUM	9740	0	40969	0	2288	1	5210	1
JHANG	1757	0	7650	0	1809	0	5953	0
KASUR	48711	2	244695	2	6928	1	34901	1
KHANEWAL	7950	0	18137	0	1890	0	5290	0
KHUSHAB	9479	0	50713	0	4775	0	14685	0
LAHORE	313439	3026	1687234	3185	54920	215	196420	264
LAYYAH	12339	0	47553	0	1512	0	9947	0
LODHRAN	7813	0	26064	0	4941	0	11304	0
MANDI BAHAUDDIN	8275	0	34711	0	5641	0	5641	0
MIANWALI	13104	0	55883	0	5105	0	14384	0
MULTAN	66596	85	366295	85	7313	11	49917	11
MUZAFFARGARH	1823	0	5826	0	980	0	2211	0
NANKANA SAHIB	29949	0	69069	0	6696	0	17582	0
NAROWAL	38657	0	123223	0	6141	0	15262	0
OKARA	51752	0	202222	0	13175	0	22895	0
PAKPATTAN	28425	0	50216	0	10505	0	21182	0
RAHIMYAR KHAN	13550	0	31314	0	3930	0	8031	0
RAJANPUR	11268	0	38255	0	5852	0	7969	0
RAWALPINDI	129006	2344	945608	2642	25363	111	130507	127
SAHIWAL	29730	0	36989	0	5620	0	7244	0
SARGODHA	71626	0	115378	0	13621	0	18510	0
SHEIKHUPURA	154632	8	443413	8	17344	14	48903	14
SIALKOT	23224	0	109135	0	7485	2	35354	2
T.T.SINGH	2199	0	6382	0	844	0	1963	0
VEHARI	49537	0	78313	11	7830	0	3137	0
Total	1593757	5495	6216303	5968	354140	596	1062573	738

8/8